



**ANDREW R. STEC OF MARS REVEALED.COM
PUBLISHES IMAGE OF EARTHLING ON MARS**



Andrew R. Stec Posted May 23, 2010

Here is the image with "objects of interest" in it. It has been highlighted with – yes – Photoshop. Any help?



Human-looking figure of male is at far right



Andrew D. Basiago May 23, 2010 at 8:49 pm

Andrew, Yes! The male humanoid figure at right is more broad-shouldered and Earth human-looking than we have previously seen in pictures of Martian humanoids on the surface. My guess would be that he is US Special Forces. Andy



The male figure is at center in this close-up



Andrew R. Stec May 23, 2010 at 8:52 pm

Bingo! He has what looks like a briefcase...



In these blow-ups, we see Earthling on Mars

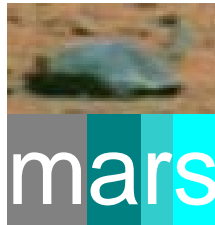
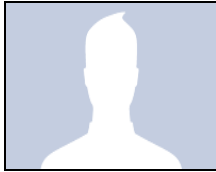


Image of Earthling on Mars – page 2



Butlin Cat May 23, 2010 at 9:45 pm

This is the teleporter chair with the guy with the briefcase, isn't it?

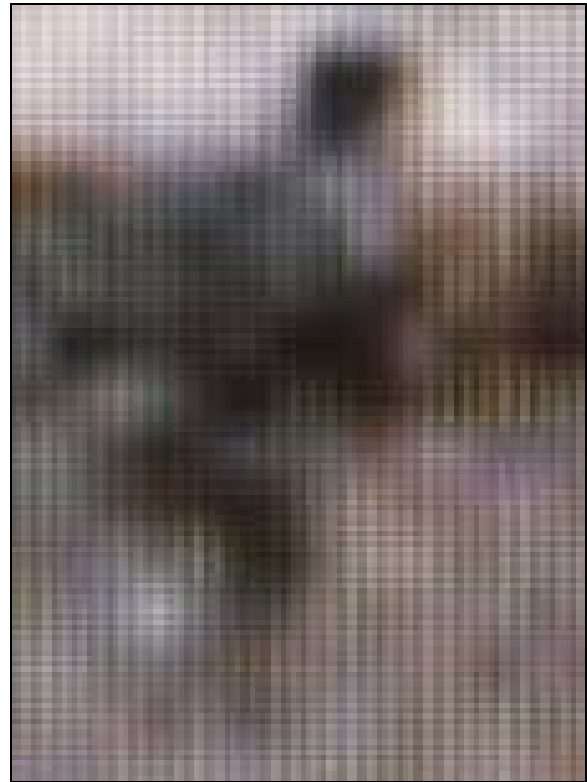


Andrew D. Basiago May 24, 2010 at 1:06 am

BC, There is no "teleporter chair" in the US quantum access arsenal. Mars is being reached via "jump room" (see Relfe, Basiago, Neumann, and Eisenhower *et al.*). There is, of course, a "Montauk chair" in the US quantum access arsenal, but it is not a teleporter. Rather, it is a magnetic transducer that prompts the chrononaut sitting in the chair to pre-experience moments in his subjective future so as to be able to describe events going on at that location in time-space. In that form of quantum access, neither the chair nor the time traveler are physically teleported but stay back in the present while his mind moves forward in time.

I think that what we are looking at here is a soldier walking past a stone object, possibly a statue of a face, which are ubiquitous on Mars. Of interest to me is what this figure is doing. I don't think he's carrying a briefcase; I think he's carrying a rifle. The black shoulder strap of the rifle is evident across his upper arm and may have slipped down the upper arm as he moved forward with his rifle in the "ready" position.

In my view, this image provided by Andrew R. Stec is highly significant and provides *prima facie* evidence supporting Emily Cragg's long-standing claim that photo-analysis of NASA's images from Mars reveals that hostile military actions have already taken place there. Andy



Human found by Andrew R. Stec on Mars

Acknowledgments

The Mars Anomaly Research Society (MARS) wishes to thank **Mr. Andrew R. Stec** ("MARS"), the producer of www.marsrevealed.com, for identifying this anomaly on Mars, sharing it online with the people of the Earth, and allowing MARS to republish these images derived from his photo-analysis of Mars.