

**REPTOID PREDATION OF HUMANOIDS FOUND ON MARS  
IN TWO PHOTOGRAPHS FROM THE NASA ROVER SPIRIT**

SEATTLE, WA (MARS) April 12, 2009 – Four months after establishing that MARS is an inhabited planet, the lawyer from Washington State who discovered life on Mars has found evidence in two NASA photographs that reptoid predation of humanoids is taking place on the surface of the Red Planet.

**12/12/2008: The day that life on Mars was proved**

On December 12<sup>th</sup> of last year, Andrew D. Basiago, 47, founder and president of the Mars Anomaly Research Society, published his landmark paper *The Discovery of Life on Mars*.

The paper is an analysis of a single NASA photograph, PIA10214, which is a westward view taken by the rover *Spirit* from the western edge of the Home Plate Plateau in the Columbia Basin of the Gusev Crater of Mars in November 2007 that was beamed back to Earth in January 2008. It was in PIA10214 that Basiago found the first dispositive evidence of life on Mars.

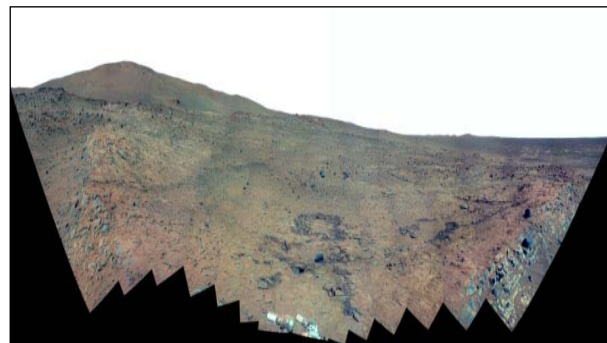


**Andrew D. Basiago**

Since then, Basiago, who is leading the campaign to have the US government release its secret documents pertaining to Mars, has carefully studied other photographs taken by *Spirit* from different parts of the Home Plate Plateau. These photographs include PIA11049, which is a southward view of the Columbia Basin taken by *Spirit* from the southern edge of the plateau during the first six months of 2008.



**NASA image PIA10214**



**NASA image PIA11049**

According to Basiago, both of these NASA images reveal a pattern of predation by reptoid species of humanoid species on Mars. “It shocks our sensibilities as human beings on this planet,” he said. “But the data being retrieved by *Spirit* shows that on Mars, humanoids are *not* at the top of the food chain.”



## ***Reptoid predation of humanoids on Mars, page 2***

### **Reptoid predation in NASA image PIA10214**

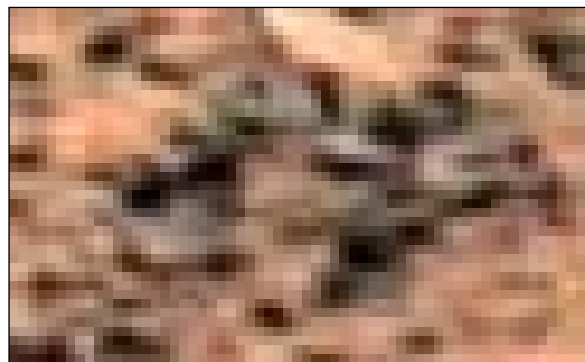
Basiago isolated the first evidence of reptoid predation of humanoids on Mars from PIA10214. It is located near the site identified in his paper *The Discovery of Life on Mars* as The Rock Garden.

In the photograph below, The Rock Garden, with its defining feature The Grotesque Humanoid Skull, can be seen occupying the lower right corner of the picture. In the upper left corner of this image, a reptile, resembling a turtle without a shell, can be seen consuming a humanoid being, legs first.



**A reptoid consumes a humanoid near The Rock Garden in the Columbia Basin of Mars**

In this close-up (*right*), the reptoid, with a set of long tentacles, can be seen chewing on the remains of one humanoid, as the lower extremities of a second humanoid being, consisting of a pair of legs and a bloody stump where the rest of its body should be, lie to the right of the first humanoid being. "This finding will test the limits of the Prime Directive," the discoverer of life on Mars observed. "Should we let humanoids perish as the food for reptoids on Mars to preserve the balance of nature there, or should we intervene to save humanoids from predation because it is the ethical thing to do?"



**Close-up: A reptoid consumes a humanoid**



***Reptoid predation of humanoid beings on Mars, page 3***

**Reptoid predation in NASA image PIA11049**

Corroborating evidence of reptoid predation of humanoid beings on Mars was found by Basiago in NASA image PIA11049. There, at the far southern reaches of the Columbia Basin, the head of a green reptile lurking behind its human quarry can be seen. The humanoid was dressed in turquoise blue clothing at the time that he became the reptoid's next meal. Shortly before he became lunch, the lower parts of his legs were bitten off. Apparently, to the reptoids on Mars, the feet of humanoids are considered a delicacy or perhaps this technique is used by the reptiles to immobilize human prey so they can be consumed.



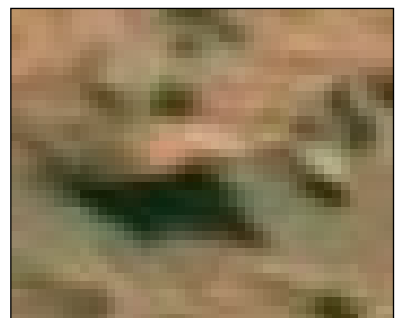
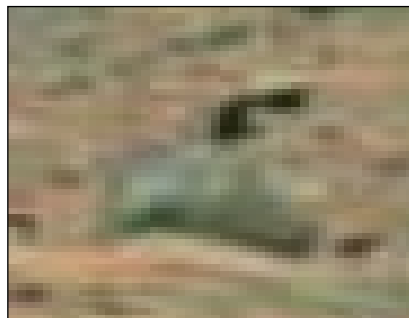
**Reptoid predator lurks behind its prey**



**Close-up: Human prey with feet bitten off**

***So plesiosaurus a carnivore***

This predation of humanoid beings by reptile species on Mars might include the plesiosaurs that Basiago discovered on Mars and wrote about in *The Discovery of Life on Mars*. Plesiosaurs are ubiquitous on Mars but they did not survive the K-T extinction on Earth, where they were carnivorous by nature.



**Plesiosaurs on Mars**



#### ***Reptoid predation of humanoids on Mars, page 4***

Below, we see two men, half like beetles, pitch forward to confront a plesiosaur (*left*), as serpents slither across the ridge (*center*) and tiny humanoids clamber onto a rock seeking safety (*right*). These scenes show that on Mars, dire conditions make predation between competing life forms very intense.



**Two men confront a plesiosaur**

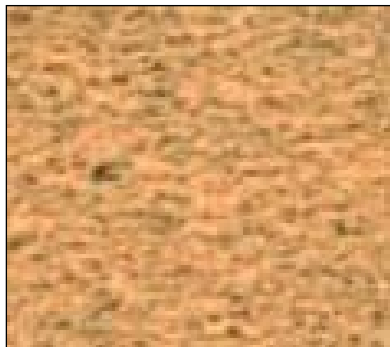


**Snakes slither across ridge**



**Humanoids clamber onto rock**

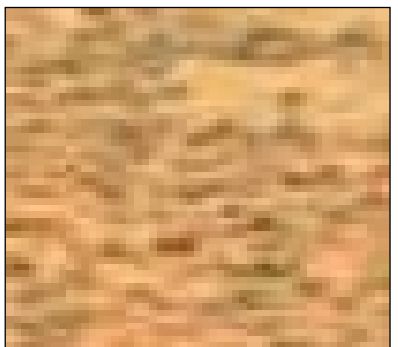
It may be that reptoid predation is the cause of the thousands of humanoid bodies littering the valley seen in PIA10214, as if they are in a mass grave or killing field, where they are now fructifying in a sticky paste (*left*). These corpses can also be seen on the Home Plate Plateau itself, deposited in great slag heaps (*center*). In some parts of PIA10214, serpents can be seen slithering across the bodies (*right*).



**Humanoid bodies**



**A great slag heap of corpses**



**Snake slithers across bodies**

This evidence does not exist in a vacuum. Rather, these humanoid corpses are deposited by the thousands in the valley bottom immediately below the statue that Basiago has called The Beings on the Edge. He has shown that this statue does not consist merely of a female figure in a blue dress but is part of a statuary complex that includes a male figure and an elaborate rock carving of a reptilian form biting the neck of a white male human being (*below*), perhaps indicating that it is an altar of human sacrifice.



***Reptoid predation of humanoids on Mars, page 5***

Reptoid predation on Mars is serious business. When one considers the evidence of a reptilian scenario on Mars – that PIA10214 contains archaeological evidence of a possible altar of reptoid sacrifice of humanoids on Mars (*right*); that forensic evidence has been found in the form of thousands of humanoid bodies littering the western littoral of the Home Plate Plateau; and that biological evidence now exists that reptoid predation of humanoid beings is quite commonplace on Mars – the data Basiago has collected from NASA's images may confirm that there is a reptilian agenda to take over not just Earth, as posited by David Icke, but the entire solar system. Thus, Basiago's Mars findings may be of interplanetary security significance.



**A statue with a reptile biting a human**