



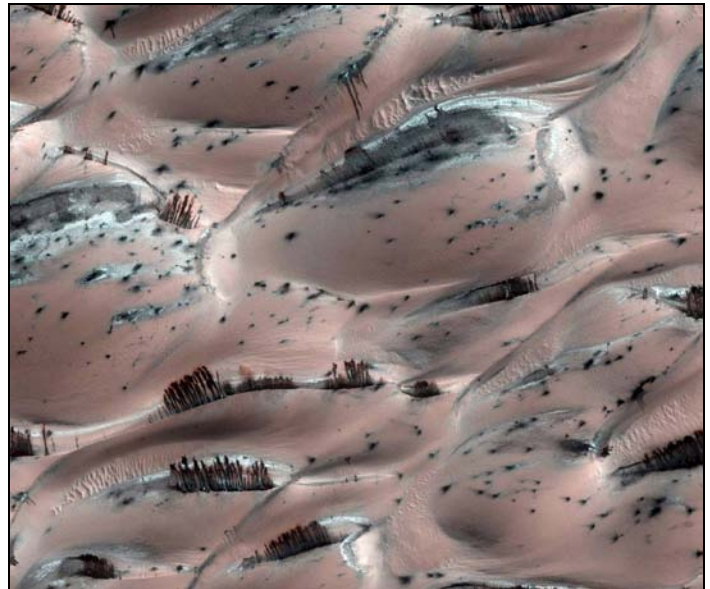
**BASIAGO MAKES “STARTLING DISCOVERY” OF
“STRIDING GREMLIN” NEAR MARTIAN “TREES”**

SEATTLE, WA (MARS) January 17, 2010 – The discoverer of life on Mars has made a “startling discovery” of an animal life form in a photograph that has attracted international press attention over whether or not it shows the presence of trees on the Red Planet.

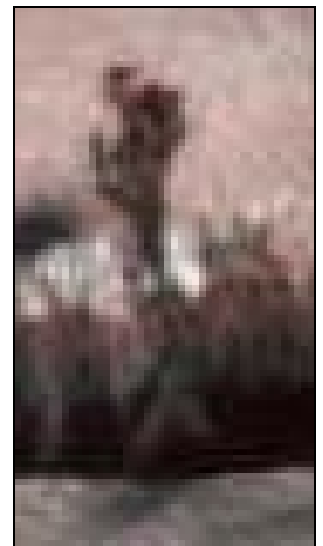
Andrew D. Basiago, 48, stated today that analyzing the image from Mars that contains dark, filamentous objects that might be trees, he has found a speckled “gremlin” striding past one of the stands of “trees” in the image.

The being appears to be intelligent and bipedal. It has a mottled complexion that has been noted on at least two other Martian humanoids found by MARS. It is walking in front of one of the stands of “trees” along the “tree” line while carrying a small human figure in its arms.

“This startling discovery might be *the* definitive proof of life on Mars,” Basiago said. “This image circled the globe after objects that resembled trees were found in it. Lo and behold, we now find that hidden among the trees is a sentient being for which the trees are habitat.”



This image has sparked international speculation that the dark, bristly objects seen amid the dunes might be trees on Mars (Credit: Malin Space Science Systems.)



Basiago has discovered a bipedal hominid (*at left*) striding past the filamentous objects that some think may be trees on Mars. The being (*right*) has horn-like protuberances atop its head, a very flat head, a mottled or calico complexion with light green, light brown and white patches, and a very spindly body type. His face can be seen as he looks to his left. The striding “gremlin” is carrying a small human figure in his arms as he walks.